



SETBACK ORDINANCE CREATES COSTLY ENERGY SHUTDOWN IN LOS ANGELES

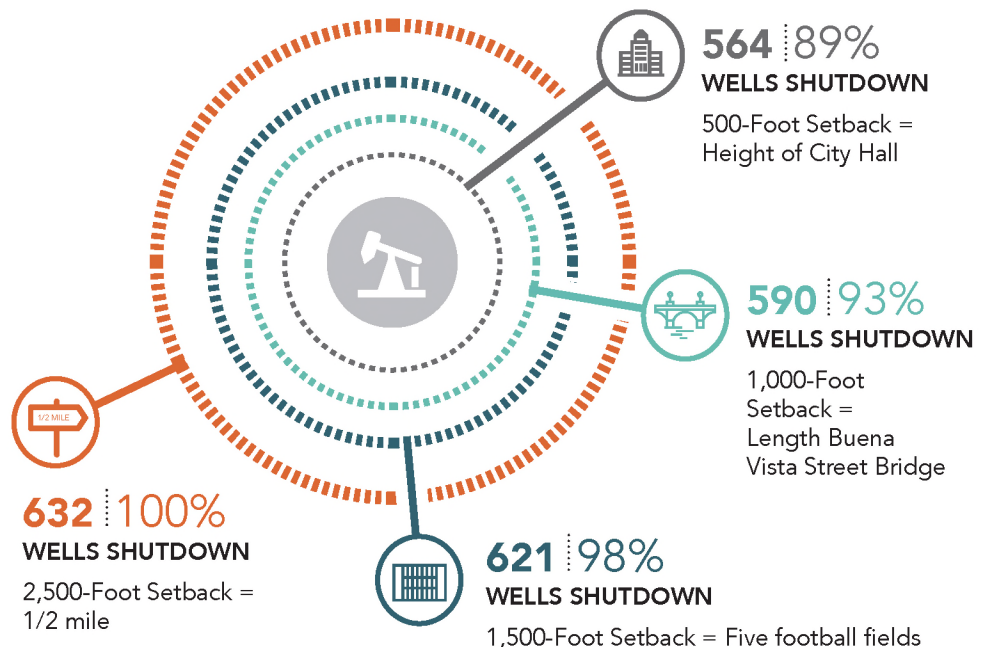
Eliminates Jobs and Damages Local Economy

The City of Los Angeles is considering establishing setback requirements on oil and gas production. If any of the setback requirements outlined below are enacted, it will make it no longer economically feasible to continue production in Los Angeles.

ALL SETBACK SCENARIOS RESULT IN A COMPLETE ENERGY SHUTDOWN IN LOS ANGELES¹

WHAT IS A SETBACK?

A setback is a required separation between a building or a structure. In dense urban areas like Los Angeles, setback requirements create impossible challenges for decades old operations (some 100 years) because of increased urban in-fill. As a result of this high density, there is no place for oil and gas operators to create increased separations.



Oil and gas production has been a vital part of the Los Angeles economy for more than 100 years, providing safe and reliable oil production, well-paying jobs and an affordable energy supply for consumers and businesses.

WHAT DOES A COSTLY ENERGY SHUTDOWN MEAN FOR LOS ANGELES?

JOBS

GONE

THOUSANDS OF **WELL PAYING JOBS WITH GOOD BENEFITS** FOR WORKING FAMILIES

REVENUE

GONE

MILLIONS IN **TAX REVENUES** THAT SUPPORT VITAL COMMUNITY SERVICES LIKE POLICE AND FIRE

AFFORDABLE ENERGY

GONE

AFFORDABLE AND RELIABLE **ENERGY SUPPLY** FOR LOW INCOME FAMILIES

CALIFORNIANS FOR
**ENERGY
INDEPENDENCE**

Californians for Energy Independence is a coalition that supports state and local policies that allow for continued domestic energy production and opposes those policies – such as oil taxes and energy bans – that would hinder production and increase reliance on foreign oil. For more information, visit: www.EnergyIndependenceCA.com